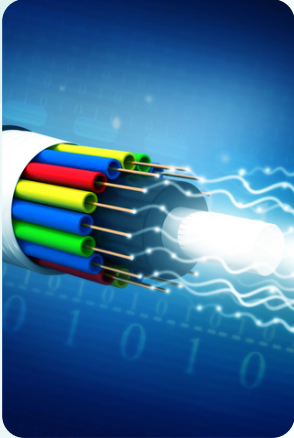




**OXP2500-1G**  
1GE ONT

FTTH HIGH-SPEED DATA

## PRODUCT OVERVIEW



OXP2500-1G is a new 1GE ONT production of Our Company which passive optical network terminal series. It provides one 10/100/1000Mbps base-T interface, one optical interface, and it is very impact. Suitable for home and small business users, can meet the FTTH high-speed data transmission of the application.

### Product Features

**GPON Standards :** ITU-T G.984

**Protocol:** Compliant with IEEE 802.3ah YD/T 1475-2006, IEEE 802.1D, Spanning Tree IEEE 802.1Q, VLAN IEEE 802.1w, RSTP IEEE 802.3ad (LACP) Ethernet-II, Ethernet-SNAP

**Route:** Support NAT Support PPPOE Support Server Client Support Route

**VLAN:** Port-based VLAN GVRP, IEEE 802.1Q VLAN

**Dimensions:** 105mm(L) ×85mm(W) ×25mm(H)

**Environment:** Operating temperature:- 0°C~60°C; Operating humidity:10%~85% non-condensing

**Storage temperature:** 40°C ~80°C; Storage humidity:5%~95% non-condensing

**PON:** Transmission speed :upstream 1.25Gbps /downstream 2.5Gbps Network coverage radius: 20KM Optical receive sensitivity:≥-28dBm Continuous light power: 0.5dBm~+5dBm

**Security:** ONU authentication mechanism

**DHCP:** Server, Client, DHCP Client List, Address Reservation

**WAN Type:** Dynamic IP/Static IP/PPPoE

**QOS:** Backpressure flow control(half-duplex) IEEE 802.3x flow control(full-duplex) Prevent Head Of Line IEEE 802.1p, CoS WR,SP and FIFO queue scheduling algorithm Port rate limit

**Internet Protocol:** IPv4,IPv6

**Interfaces:** 1x10/100/1000M RJ45 port

**Management:** Various management modes such as Web, TELNET Debug function.

**Power supply:** 110~240VAC 12V/0.5A DC

**Power interface size:** 2.1mm/5.5mm

**Power Consumption:** 2.5W

**Buttons:** Power ON/OFF Button, WPS/WiFi Button, Reset Button

**Safety:** IEEE 802.1x, access control based upon Port; support local and remote RADIUS. CHAP,EAP certification; Storm control, port protection,

**Package Contents:** 1 x GPON Router 1 x Quick Installation Guide 1 x Power Adapter