

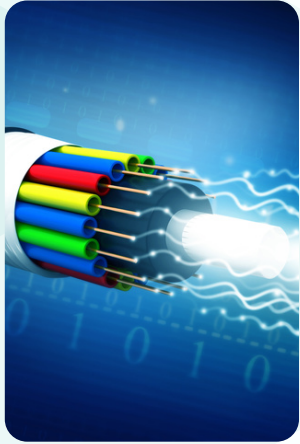


## OXP2500-2G-1V-AC

DUAL BAND 2G 1V ONT

FTTH HIGH-SPEED DATA

# PRODUCT OVERVIEW



OXP2500-2G-1V-AC is for the broadband access market based on the introduction of GPON technology passive optical network terminal products. It's with GPON OLT are used together to provide a complete broadband access solution. OXP2500-2G-1V-AC can integrate wireless function with meeting 802.11 n/b/g/ac technical standards, It has built-in high gain directional antenna, the wireless transmission rate up to 1200Mbps. It has the characteristics of strong penetrating power and wide coverage. It can provide users with more efficient data transmission security. The device also has VoIP, interface support. Suitable for home or business users, can meet the FTTH high-speed data transmission of the application.

## Product Features

**GPON Standards :** ITU-T G.984

**Distance:** 20KM Max

**Data Rates:** Upstream:1.25Gbps, Downstream:2.5Gbps

**Wireless Standards:** IEEE 802.11ac/n/a 5 GHz, IEEE 802.11n/b/g 2.4 GHz

**Wireless Rate:** 5 GHz 867 Mbps, 2.4Ghz 300 Mbps

**Quality of Service:** IEEE 802.1p, CoS WR, SP and FIFO queue scheduling algorithm Port rate limit IEEE 802.1x, access control based upon Port; support local and remote RADIUS.

**Port Forwarding:** Virtual Server, Port Triggering, UPnP, DMZ

**VLAN:** 802.1Q tag VLAN, VLAN transparent Mode/VLAN translation Mode/ VLAN translation mode/VLAN trunk mode

**Access Control:** Parental Control, Local Management Control, Host List, Access Schedule, Rule Management

**Operation Frequency:** 2.4GHz & 5GHz

**Wireless Security:** WEP, WPA / WPA2, WPA-PSK/ WPA2-PSK encryption

**VOIP Standards:** SIP (RFC3261), ITU-T G.729/G.722/G.711a/G.711

**Internet Protocol:** IPv4,IPv6

**WAN Type:** Dynamic IP/Static IP/PPPoE

**DHCP:** Server, Client, DHCP Client List, Address Reservation

**Firewall Security:** DoS, SPI Firewall, IP Address Filter/MAC Address, Filter/Domain Filter, IP and MAC Address Binding

**VOIP Features:** One RJ-11 FXS ports for connecting to analog telephones Call forwarding, Call waiting, Call block, 3-way conference call, etc.

**Management:** Access Control, Local Management, Remote Management

**Interfaces:** 1 x SC/APC OR UPC PON Port, 2 x 10/100/1000Mbps LAN Port, 1 x FXS Port

**Buttons:** WPS/WiFi Button, Reset Button

**Power Supply:** DC 12V 1.5A

**Antenna:** 4 x 5dBi fixed antennas

**Dimensions (W X D X H):** 195 x 135 x 37mm

**Environment: Storage temperature:** -40°C~80°C, Storage humidity:5%~95% non-condensing

**Package Contents:** 1 x GPON Router, 1 x Quick Installation Guide, 1 x Power Adapter, 1 x RJ45 LAN Cable